



# 2 & 3 BHK FLATS

Price Start from

2 BHK : 47.49/-<sup>\*</sup>  
Lakh

3 BHK : 57.71/-<sup>\*</sup>  
Lakh

3 BHK : 62.99/-<sup>\*</sup>  
Lakh

1227.78sq.ft

1311.62 sq.ft



# ABOUT PROJECT



P50500054945



The Celebrity address in town is ready to move into a contemporary and stylish urban complex in Nagpur.

This Project delivers the highest level of design and craftsmanship, uncompromising quality, and unparalleled service - putting in the league of central India's finest. Our homes are designed to enable more productivity, and amenities are designed and curated to equip with opportunity! Be it greens/open spaces designed to live a healthier and fuller life or gentry to match like-mindedness, banquets, and clubhouses to network or striking the right chord with the right people, that your next biggest milestone, is within reach.

Experience the epitome of comfort and luxury with our comprehensive range of amenities, including a Kids' Swimming pool, a Clubhouse, a Garden, a Guest Room, Yoga, etc.

**Connect with Us : 91- 8602020211**  
**(Click on number for details)**



# GALLERY



## Bird View

**Connect with Us : 91- 8602020211**  
**(Click on number for details)**



# GALLERY



Night View



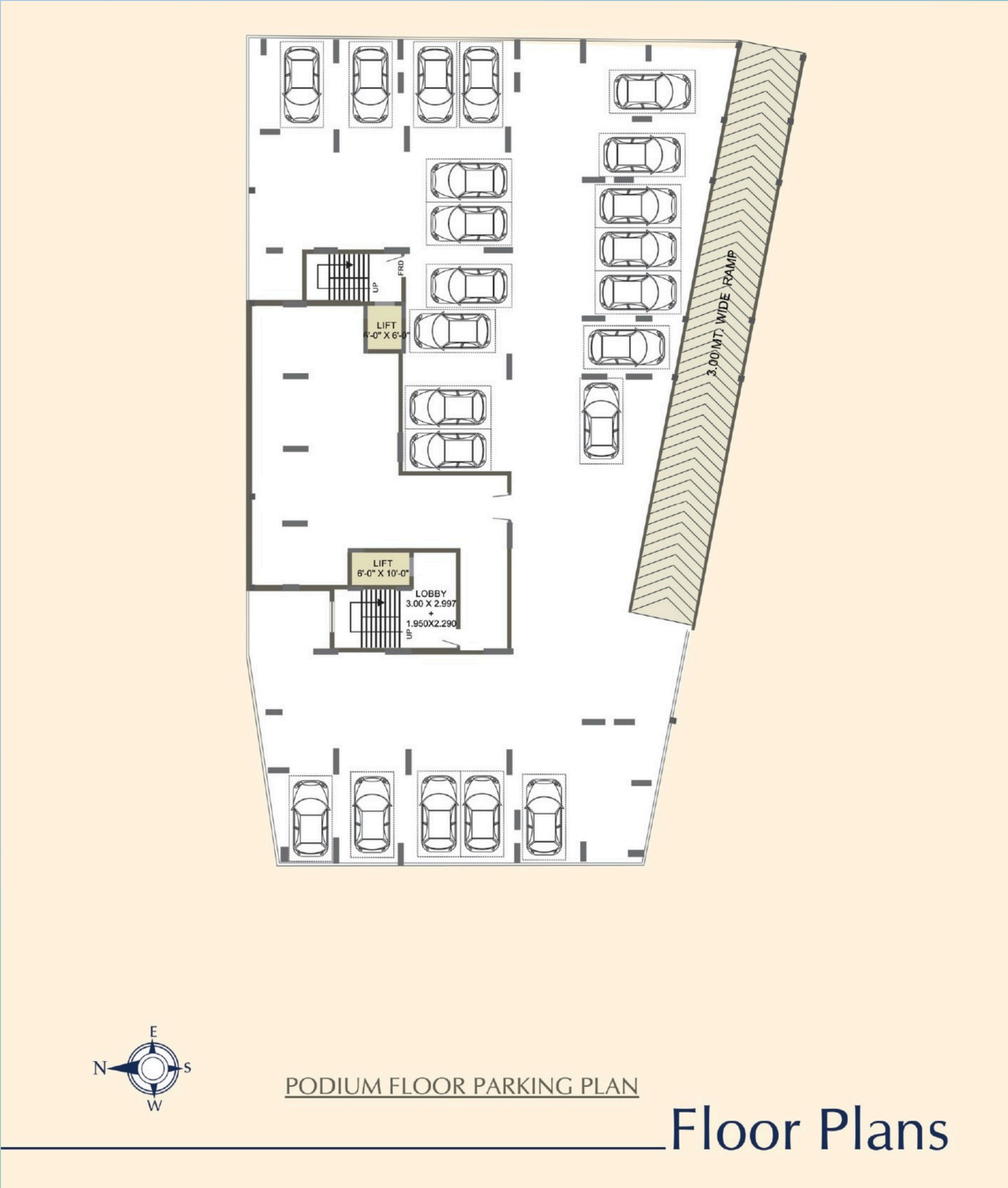
# GALLERY



Ground Floor Plan



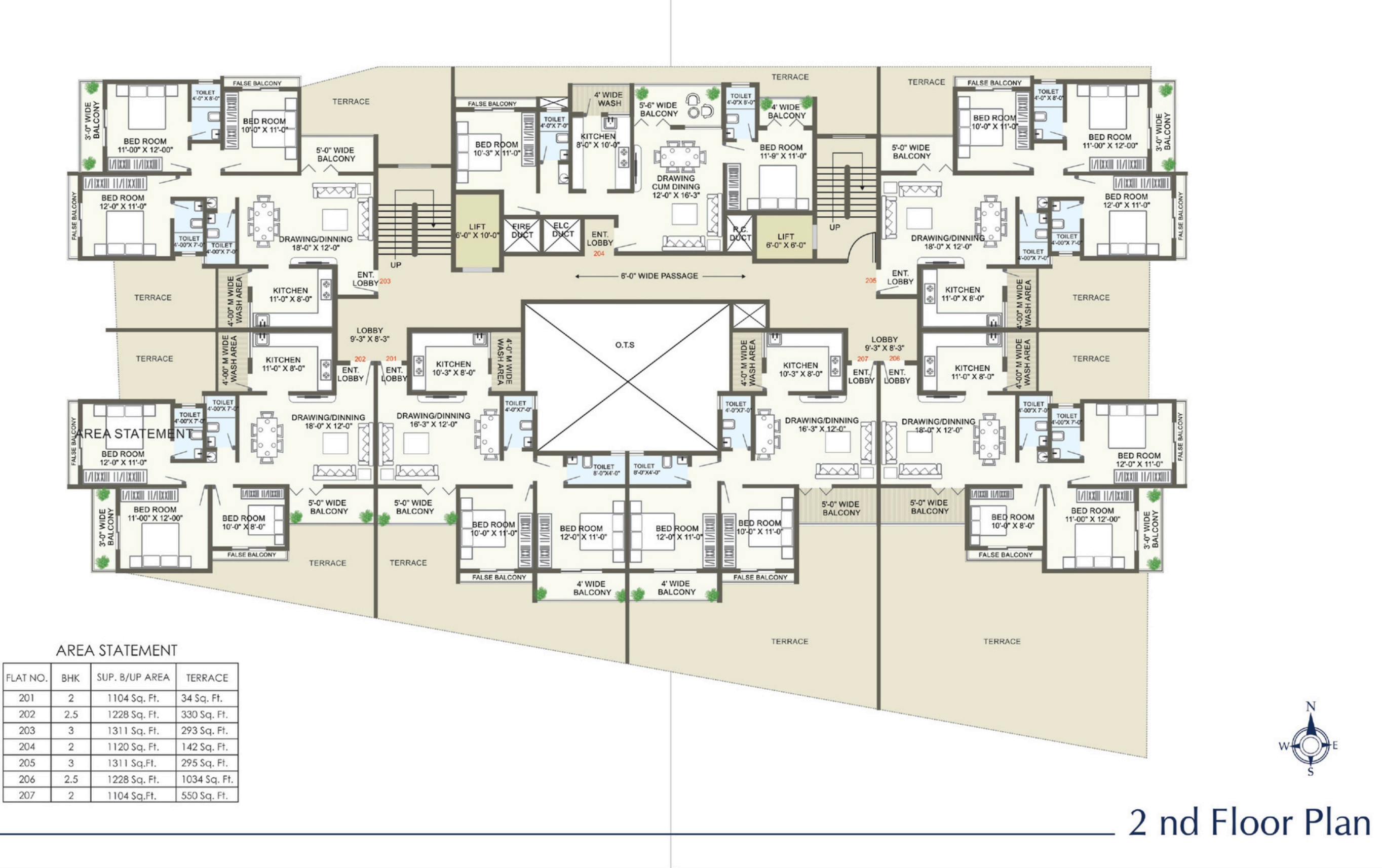
# GALLERY



Podium Floor Plan



# GALLERY



Second Floor Plan



# GALLERY



## AREA STATEMENT

FLAT NO.	BHK	SUP. B/UP AREA
301 To 1301	2	1104 Sq. Ft.
302 To 1302	2.5	1228 Sq. Ft.
303 To 1303	3	1311 Sq. Ft.
304 To 1304	2	1120 Sq. Ft.
305 To 1305	3	1311 Sq. Ft.
306 To 1306	2.5	1228 Sq. Ft.
307 To 1307	2	1104 Sq. Ft.



TYPICAL 3rd to 13th FLOOR PLAN  
Refuge area is at 8th floor

## Typical (3rd - 13th) Floor Plan



# GALLERY



**2 BHK View**



# GALLERY

Scan for quick tour



[click here for view](#)



**3 BHK View**



# AMENITIES



## SWIMMING POOL

Swimming Pool for kids to Enjoys  
There Days & Health.



## TERRACE

Rooftop garden, seatout  
area & Utility.



## EV CHARGING

Dedicated Elecatic Vechicle  
charging points in parking.



## SECURITY

Secured premises with Camera,  
security Cabin & designed  
compound wall.



## SOLAR PANNEL

Solar Panel for reduce the  
electricity bills of common area.



## PROVISION FOR FIRE FIGHTING



## AUTOMATIC WATER LEVEL CONTROLLER



## KIDS PLAY AREA

Dedicated play area  
for your kids in gated community.



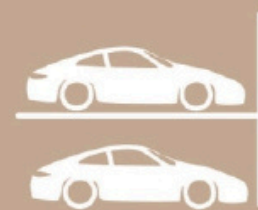
## COMMUNITY HALL

Dedicated hall for indoor program  
& a lot activity for all age members.



## GENERATOR BACKUP

Power backup for Lift,  
Lighting in common areas.



## PODIUM PARKING

A huge and multi level parking  
on ground & podium floor.



## 24X7

Water supply  
from overhead tank



## RAINWATER HARVESTING

Amenities



# AMENITIES



**Club House**



**Swimming**

**Kids Swimming Pool**



**Garden**



# AMENITIES

**LUXURIOUS SPACES FOR COZY CONFORT**





# SPECIFICATION



## inside briff

- ◆ **STRUCTURE**  
Earth quake resistant RCC  
Frame Structure.  
Super structure outer 0.15mtr,  
inner 0.115mtr thick.
- ◆ **PLASTERING**  
External Walls : Funty Palster.  
Internal Walls : Funty Plaster.
- ◆ **DOORS**  
Front designer panel door  
All internal door frames in R.C.C  
& Laminated flush door panel.
- ◆ **WINDOWS**  
Aluminum/ Glazed/Sliding windows  
with mosquito net,  
powder coated & ms safety Grill.
- ◆ **Tiles**  
Vitrified tiles in all rooms.  
Anti skid tiles in bathroom.  
Full hight glazed tiles on  
bath room walls.
- ◆ **WALL FINISH**  
Internal : Plastic emulsion paint with putty  
in all rooms.  
External: Weather Proof exterior paint
- ◆ **ELECTRICAL**  
Concealed fire resistant high quality  
ISI mark cables.  
High quality Modular switches.  
Tv Point in living area.  
A/C Points master bedroom.  
Provision for invertor.
- ◆ **KITCHEN**  
Working platform with premium granite.  
Glazed tiles dado above platform & S.S. sink,  
water purifier point.
- ◆ **PLUMBING & SANITATION**  
Hi quality ISI Mark CPVC Concealed  
S.W.R plumbing lines.  
Hi quality sanitary ware fittings  
(Jaquare or equivalent brand)  
in all bathrooms.





# **WHY SONESTAA PROJECT - NEW MANISH NAGAR, NAGPUR**



- **Township Project**
- **1.5 Km from Nexa showroom & Mahajan aata chakki**
- **200 M from DP Cement road near Petrol Pump, Manish Nagar**
- **15+ Amenities**
- **500 M from Bus Stand**
- **500 M from Market**
- **Just 5 to 10 mins drive from Medical Facility**
- **Quality construction**
- **Spacious flat size**
- **N.M.R.D.A Sanction**
- **Allotted Car Parking**



# PROJECT DETAILS:



- Project Total Area - 30,000 Sq. Ft.
- 2 BHK : 1105 - 1120 sq.ft
- 3 BHK : 1227.78 - 1311.62 sq.ft
- Number of Tower : 1
- Total number of floors : G + 13
- Total - 2 BHK : 36  
3 BHK : 48
- Total Unit : 84

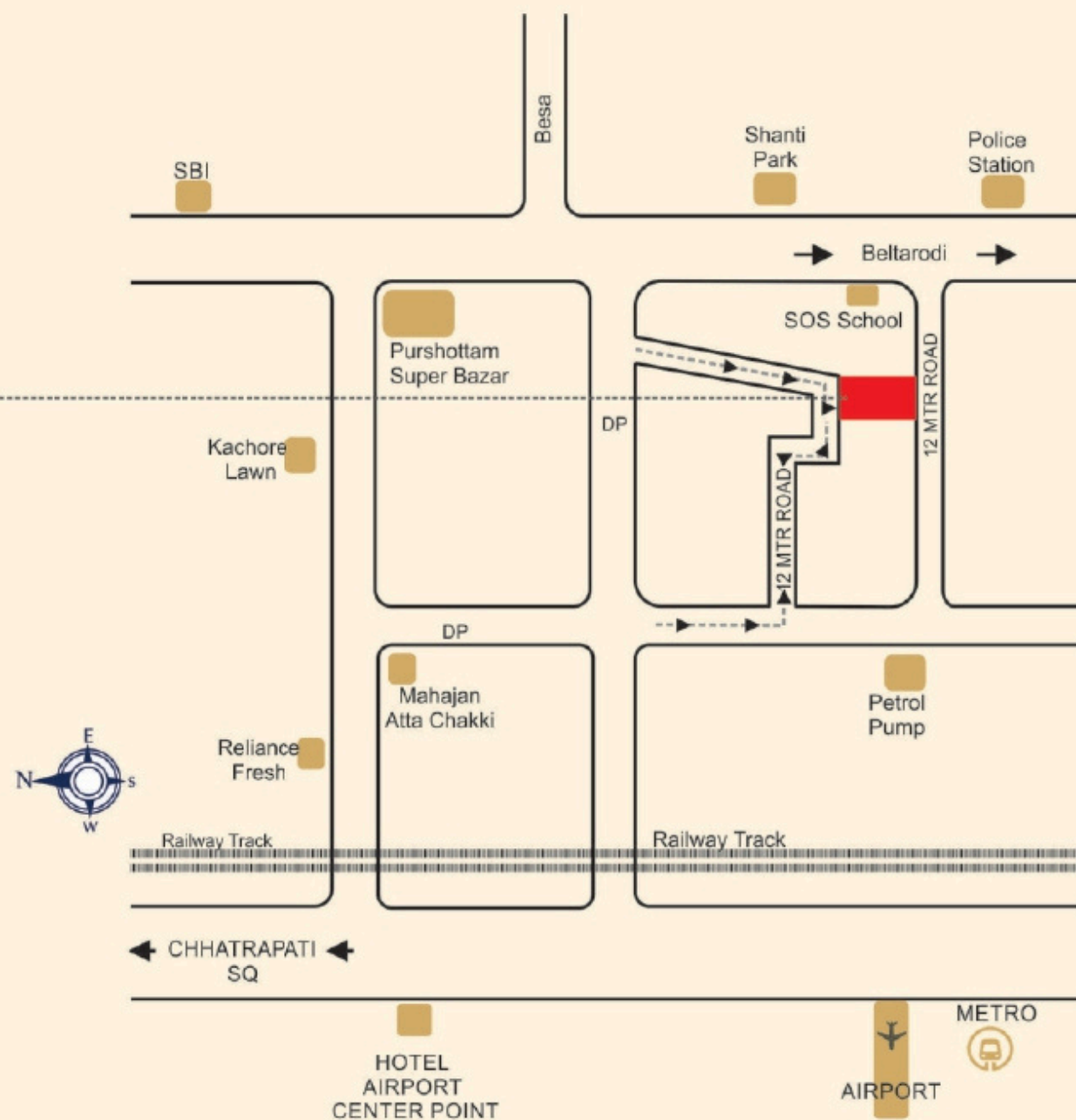
## Other Charges

- MSEB + Water+ Solar + Development + Society + Formation Fees - 77,500/-
- Maintenance 2 BHK (1 yr) - 50,000/-
- Maintenance 3 BHK (1 Yr) - 60,000/-
- Stamp Duty - 6%
- Registration - 30,000/-
- Legal Charges - 20,000/-
- GST - 1% to 5%





Scan for the  
real location



### Location Map

Kh no. 22/1/4, Mouza-Beltarodi, New Manish Nagar, Nagpur

[Click Here](#)



“

**Give Reference**

**&**

**Earn upto**

**51,000/-\***

”

[Click Here](#)





**A50500007465**

**For More Detail Click  
On Below Number  
Amit Raut**

**+91 - 8602020211**

**+91 - 9766616552**





**+91 - 9766616552**



**+91 - 8602020211**



**Email Us**



**Visit Our Website**



**Follow Us**

