

DEVELOPED BY GOLDEN HOMES

-  VOLLEYBALL COURT
-  SKATING RING
-  CRICKET PITCH
-  TENNIS COURT
-  OPEN AIR THEATRE
-  BASKETBALL COURT
-  OPEN BADMINTON COURT



P50500050049

2&3 BHK SMART HOME FOR  
ECO LUXURY SPORTIER LIFESTYLE



**GOLDEN VESTA**

by

**GOLDEN HOMES**

Your Dream, Our Passion...

## ABOUT PROJECT :

Golden Homes is a brand with an aim to provide luxurious and Quality Life style.

After successful completion of our dream project Luxury Villas at Shankarpur, we are launching 2&3 BHK-Smart homes for eco luxury sportier lifestyle with the name 'Golden Vista', spread in 2.25 acres of land, consisting two G+11 towers and open space with 25+ world class amenities like the calm and clean swimming pool, the lavish club house and the children's play area. And adjacent 35000 sq.ft designed for outdoor sports. We have everything that exhilarates your energy and uplifts your standard of living.

Experience a wonderful and complete lifestyle with all the convenience just for you and your family, only at Golden Vista by Golden Homes.

AERIAL NIGHT VIEW

## AMENITIES :

- WIDE INTERNAL ROAD
- C.H. ROOF TOP SWIMMING POOL



- OPEN PLAY AREA FOR CHILDREN

- VOLLEYBALL COURT
- SKATING RING
- OPEN BADMINTON COURT \ TENNIS COURT



- OPEN AIR THEATRE
- SENIOR CITIZEN SITTING AREA
- CRICKET PITCH

- INDOOR PLAY AREA (CHESS, CARROM)



- INDOOR GYM



**Fully Ventilated  
Apartments**



**Grand Entry Gate**



**Club  
House**



**Video Door  
Phone**



**Community  
Hall**



**Temple**



**Yoga & Meditation  
Area**



**Common EV  
Charging Point**



**Generator Backup  
for Common Area  
Lights +1 Lift**



**Visitor Car  
Parking**



**Garden**



**24\*7 Water Supply**  
(Corporation & Ground Water)



**Paved  
Pathway**



**Allotted One Car  
Parking**



**24\*7 Security with  
CCTV Surveillance &  
Compounded Society**



**Fire Fighting  
Equipments**



**Rain Water  
Harvesting**



**Sewage Treatment  
Plant**



# SPECIFICATION

## STRUCTURE

- Earthquake Resistance RCC Frame Structure.

## KITCHEN

- Kitchen Granite Platform with one Stainless Steel Sink.
- Designer Dado Tile Up to 2FT. above Kitchen Platform.
- Provision for Exhaust Fan.
- 2x4 Vitrified Tiles Flooring.

## ELECTRIFICATION

- Concealed Copper Wiring with Circuit Breakers ISI Marked of Polycab / RR Cable or Equivalent Brand.
- Adequate Electrical Points with Modular Switches of Legrand, Wipro or Equivalent Brand.
- TV Point in Living Room.
- Aqua Guard Point in Kitchen.
- Chimney Electric Point in Kitchen.
- Geyser Point in all Bathrooms.
- AC Points in all Bedrooms and Living Room.
- Wi-Fi Cabling up to Living Area.

## DOOR & WINDOWS

- Wooden Door Frame for Main door with Laminated Door.
- Powder Coated Aluminium Sliding Windows with Mosquito Net.
- Flush Door in Toilet and Balcony with RCC Frame.
- Flush Door with Wooden Frame for Bedrooms.
- Granite Window Sill.
- M S Safety Grill for Regular Windows.

## TOILET/BATHROOM

- Toilet / Bathroom Sanitary Fittings of Jaguar or Equivalent Brand.
- CP fittings of Jaguar or Equivalent Brand.
- Anti-Skid Floor Tiles in Toilet.
- 4x2 Toilet Wall Tiles Up to 7 FT. Height Standard Brand.
- Hot and Cold Diverter with Overhead Shower.

## INTERNAL FINISH

- 4x2 Vitrified Tiles Flooring Of Standard Brand.
- 2x2 Anti-Skid Flooring in Terrace / Balcony.

## PAINTING

- Inside Wall OBD Painting with Putty and External Paint with ACE / WEATHER SHIELD or Equivalent.

## RAILING

- S.S. Glass Railing in Balcony.

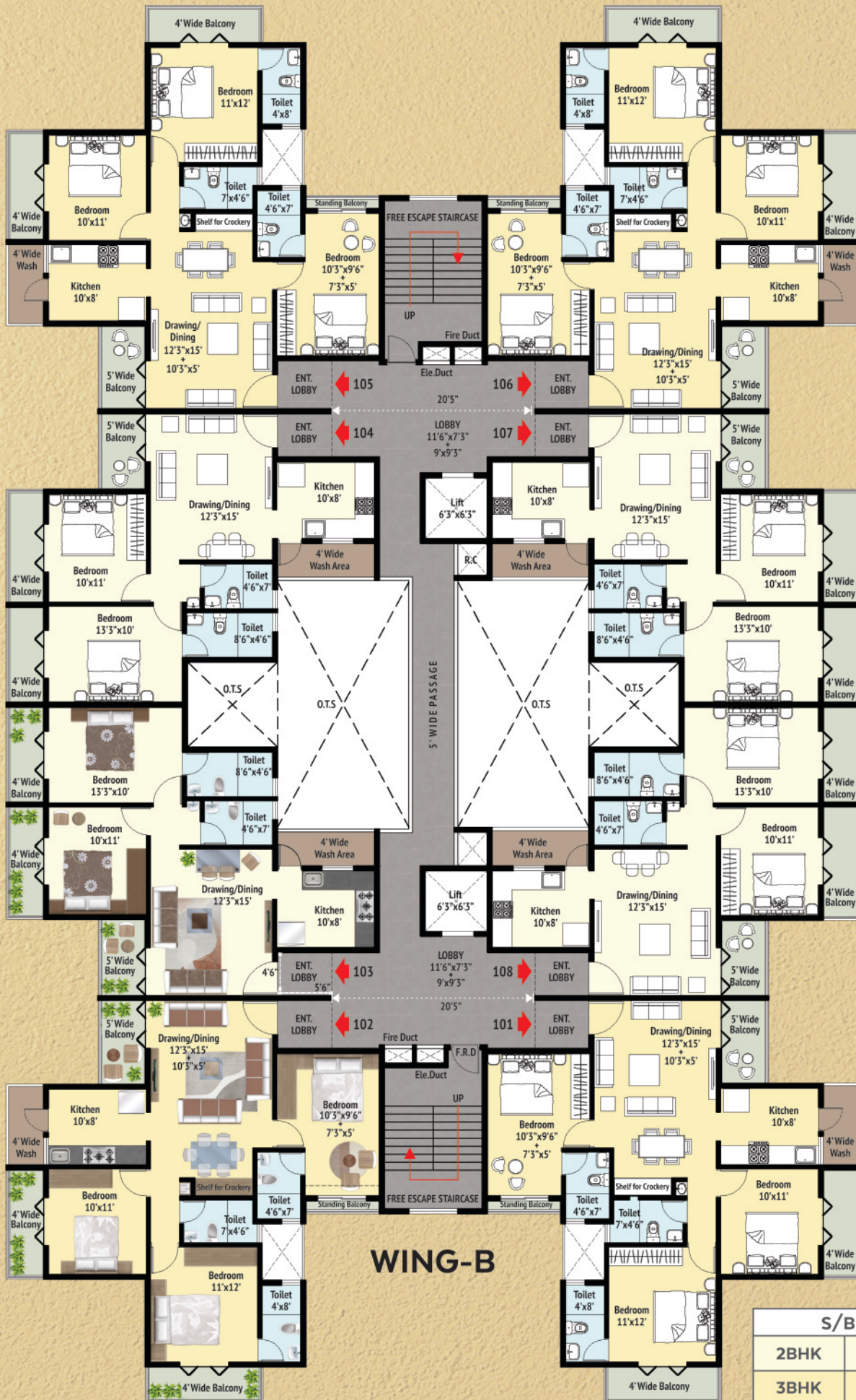
## PLUMBING

- Plumbing Branded - ISI Marked.

## WATERPROOFING

- Proper Waterproofing for Bathrooms, Utility Area and Terraces.

# TYPICAL FLOOR PLAN - 2ND TO 11TH

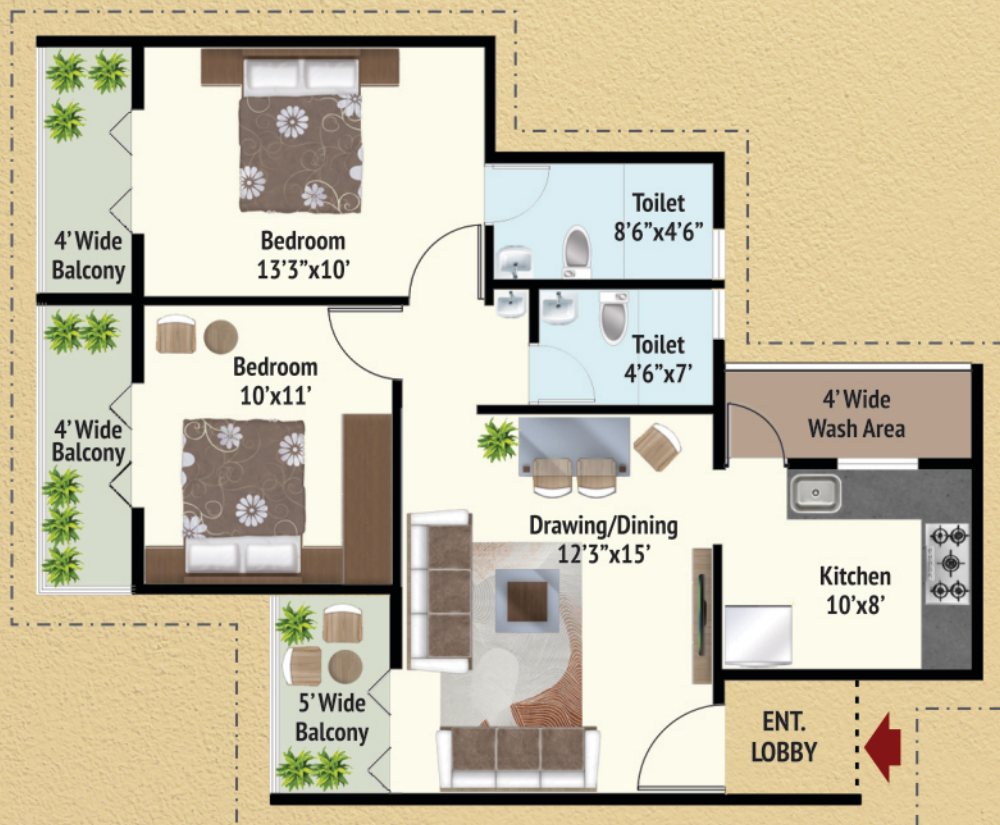


S/B AREA	
2BHK	1140 SQ. FT
3BHK	1360 SQ. FT

**2BHK**



**1140 SQ. FT.**



# 3BHK



1360 SQ. FT.





C.H. Roof Top  
Swimming Pool

Multipurpose Court  
Basketball/Volleyball/Skating

Fitness

Club  
House

Toddler Play Area/  
Green Gym

Open Air  
Theatre

Seating  
Area

Grand Entry Gate

Creche

Fully Ventilated Apartment

Tennis Court

Cricket Pitch

Compounded  
Society

Open Play Area  
for Children

Allotted Car Parking

24x7 Security

## LOCATION MAP



Scan For Location

For Walkthrough and more information :



@goldenhomesnagpur



**GOLDEN HOMES**  
Your Dream, Our Passion...

## GOLDEN HOMES INFRASTRUCTURES

Architect  
Ar. Chandrashekar Giripunje

Structural Engineer  
Er. Nikhil Gangamwar

### • OFFICE ADDRESS •

3rd Floor, Plot No 107, Vivekanand Nagar, Near Sai Mandir Chowk, Wardha Road, Nagpur - 440015.

### • SITE ADDRESS •

Golden Vista, Kh 136/2, Ph No - 38, Behind St. Vincent Pallotti School Besa, Pipla, Nagpur

Email - [sales@goldenhomes.org.in](mailto:sales@goldenhomes.org.in) | Contact -

Disclaimer : This Brochure is purely a conceptual presentation and not a legal offering. The developers reserve the right to alter and make any changes in the elevation, plans, area and specifications etc as deemed fit.